




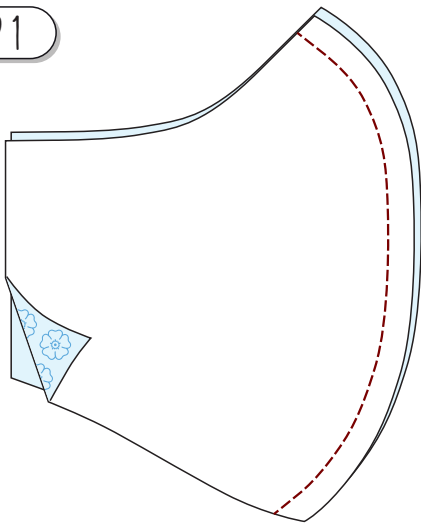


# FACE MASK INSTRUCTIONS

## ADULT DESIGN 2 - WITH FILTER POCKET

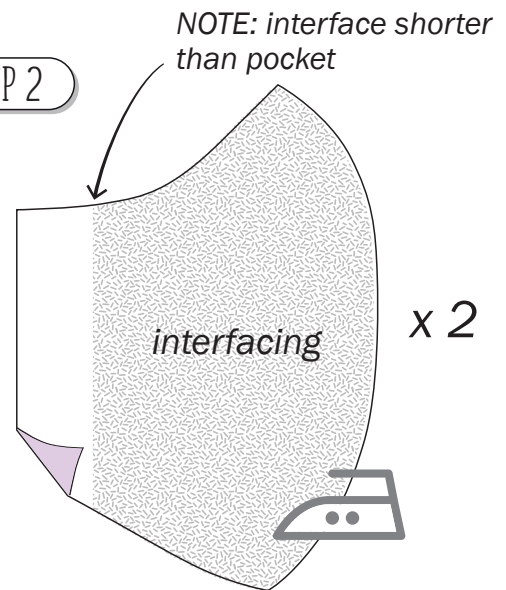
- ✿ Cut 2 x outer mask pieces (left and right) 
- ✿ Cut 2 x pocket pieces (left and right) 
- ✿ Cut 2 x iron-on interface pieces (left and right) 
- ✿ 2 x 200mm long 2 or 3mm round elastic (better than flat elastic that seems to pop off your ears!)
- ✿ 1 x wire for nose piece, ideally 120mm or up to 160mm long (you can buy ones specifically for masks online or can be a bag tie or a pipe cleaner)

### STEP 1



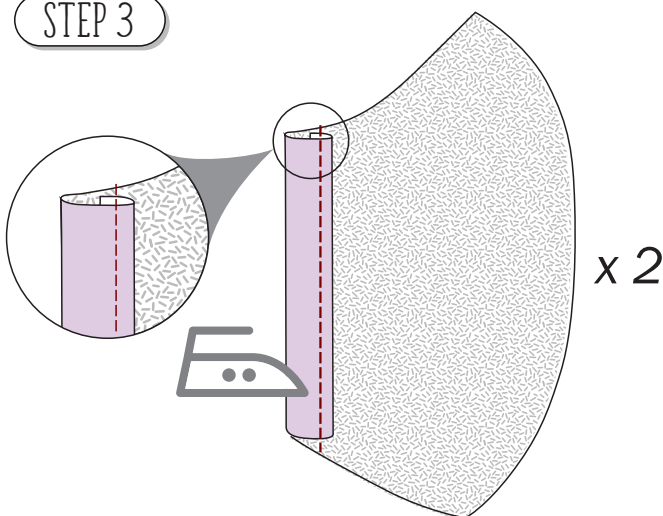
With right sides facing, sew **outer mask** pieces together along long outer edge

### STEP 2



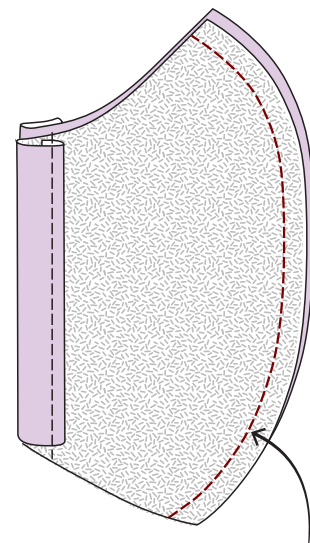
Take the **pocket** pieces and iron on the interfacing on the reverse side of each

### STEP 3



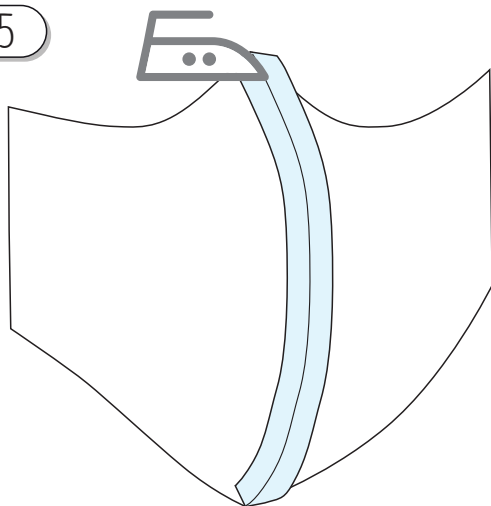
- (a) Take the **pocket** pieces and double fold and iron down to the edge of interfacing.  
(b) Then sew close to the inner edge as shown

### STEP 4



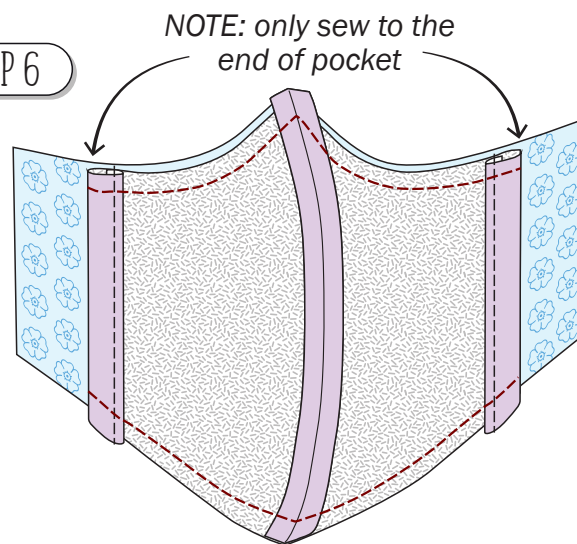
Then with right sides facing, sew **pocket** pieces together along long outer edge

# STEP 5



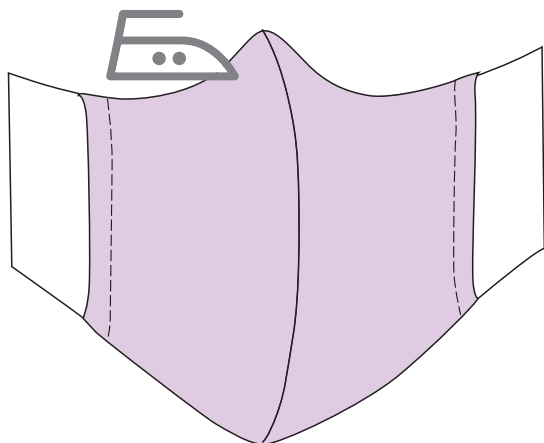
Iron down seam on **outer mask** piece and do the same on the **pocket** piece

# STEP 6



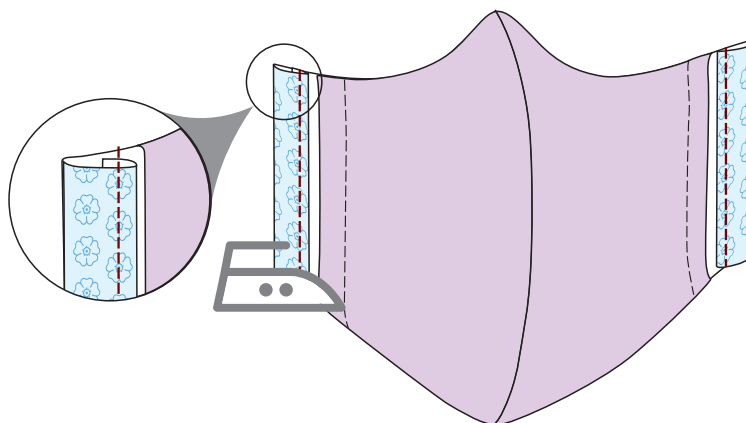
With right sides facing, sew **outer mask and pocket** pieces top and bottom as shown

# STEP 7



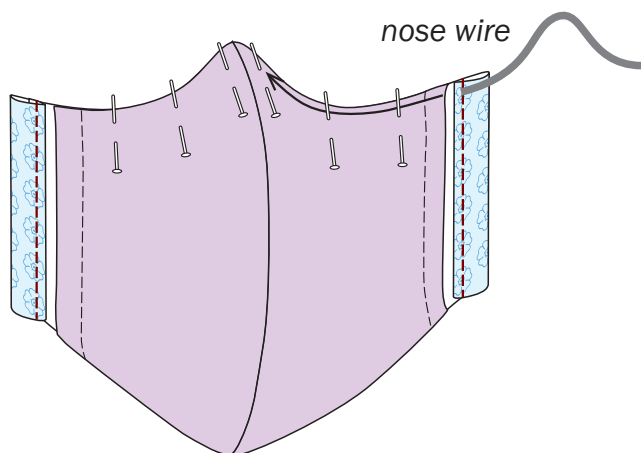
(a) Turn inside out. (b) Then iron seams flat

# STEP 8



(a) Double fold and iron down to about 2mm from the edge of the pocket on each side  
(b) Then sew close to the inner edge as shown

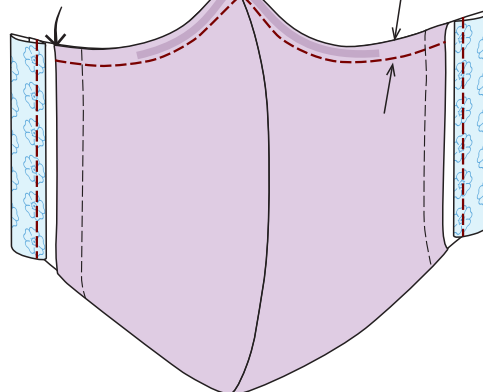
# STEP 9



(a) Feed nose wire along the top of the mask (b) pin into place

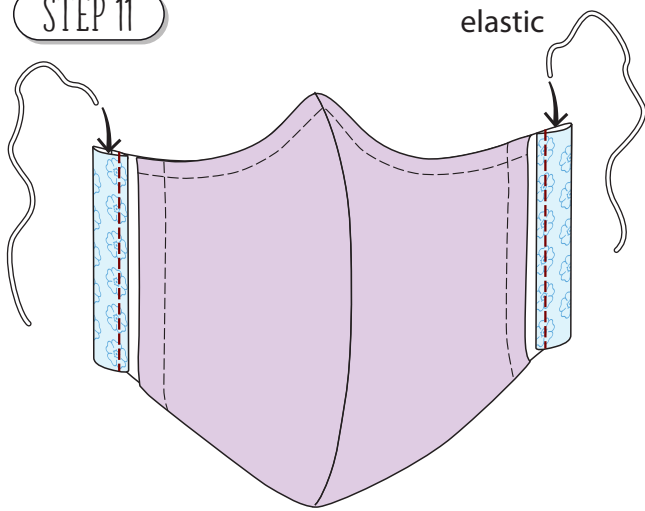
# STEP 10

Note: Only sew to the end of the pocket no further!  
about 4mm down to accomodate wire



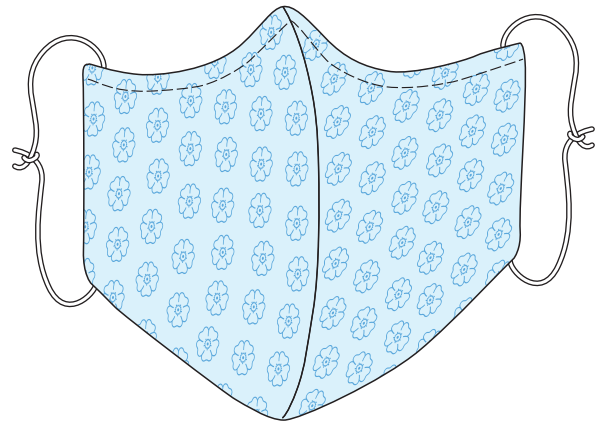
Sew along top about 4mm down to allow for the nose wire.

STEP 11



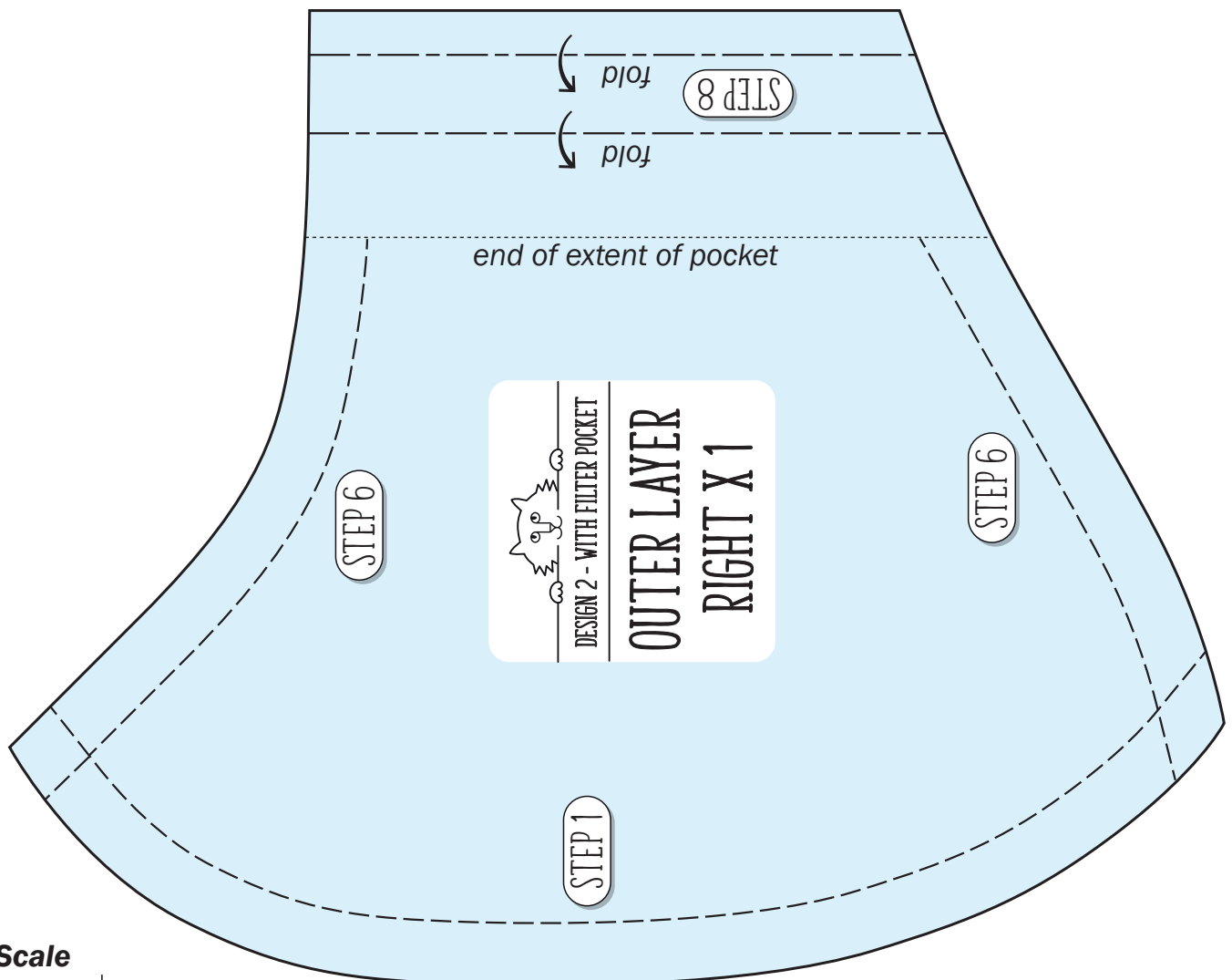
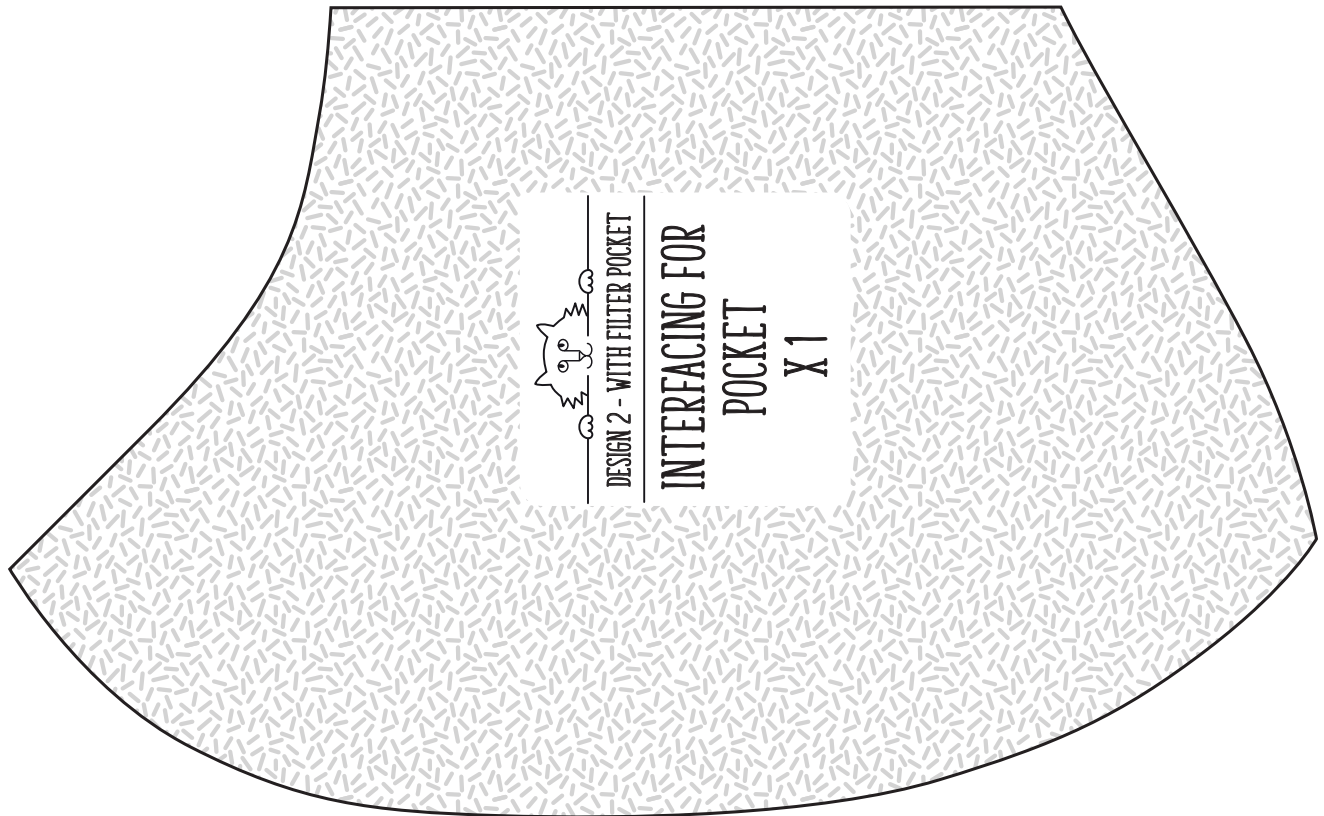
*Feed each elastic through the end channels and tie a knot*

STEP 12



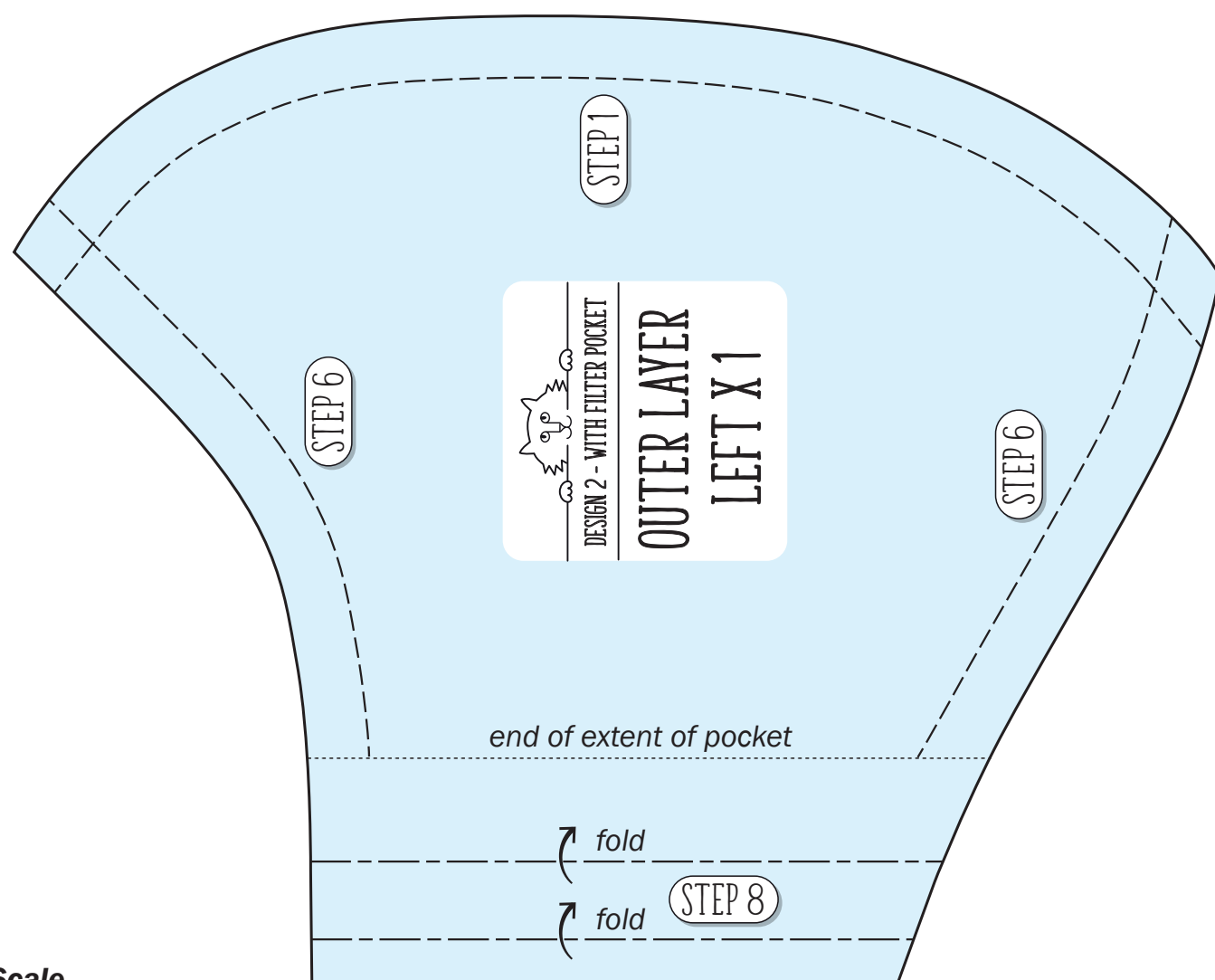
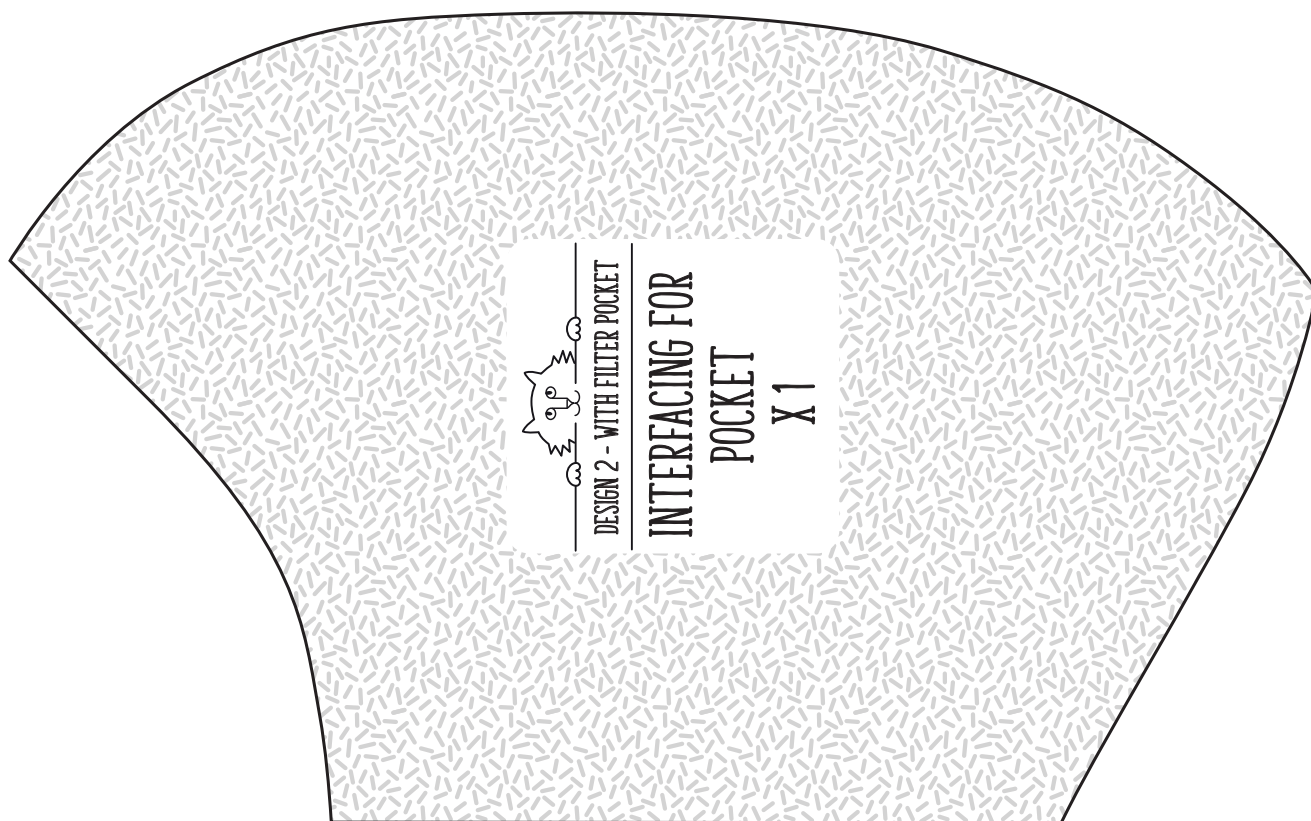
*Now you have a completed face mask!!*

# FACE MASK PATTERNS - DESIGN 2 WITH POCKET



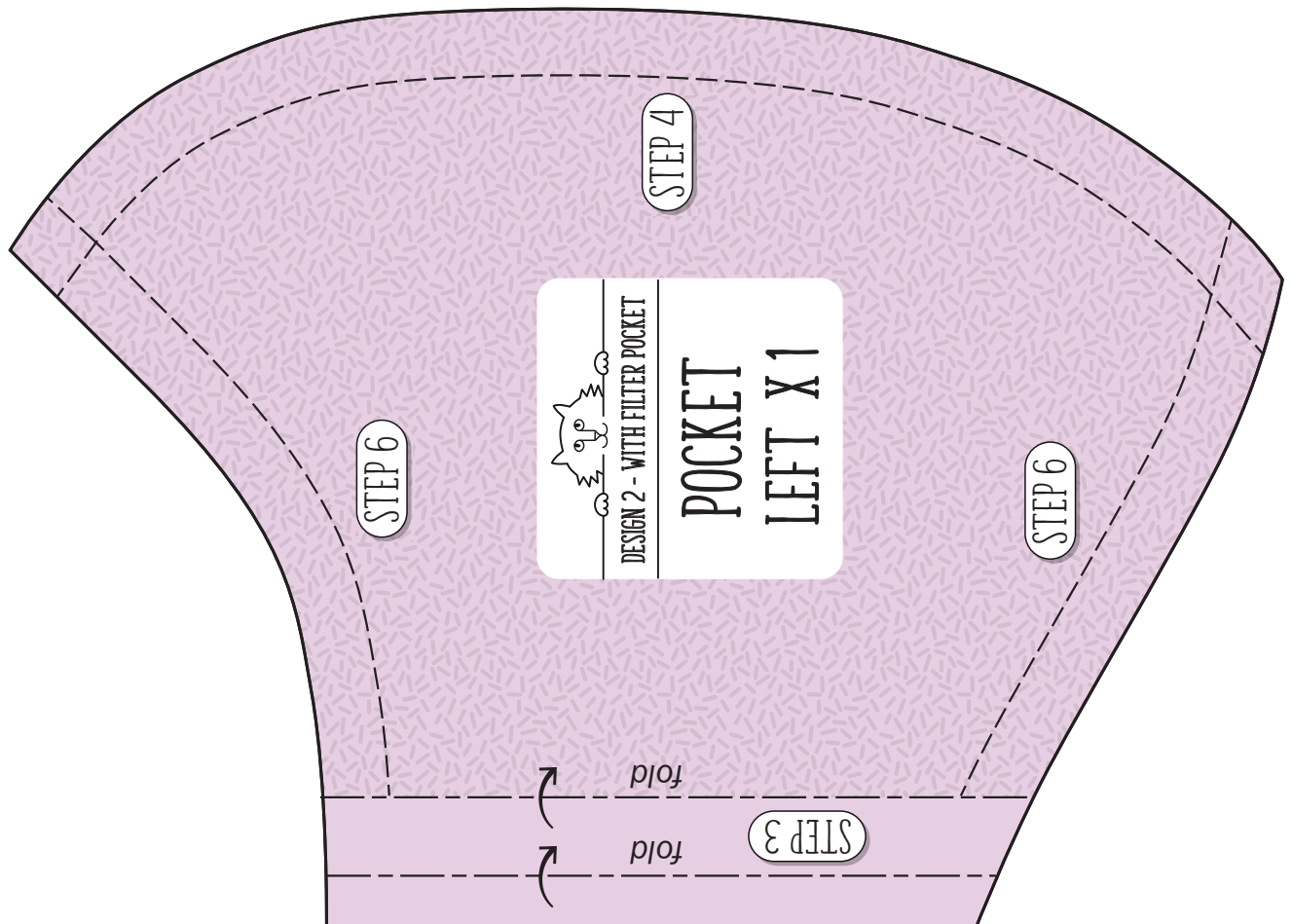
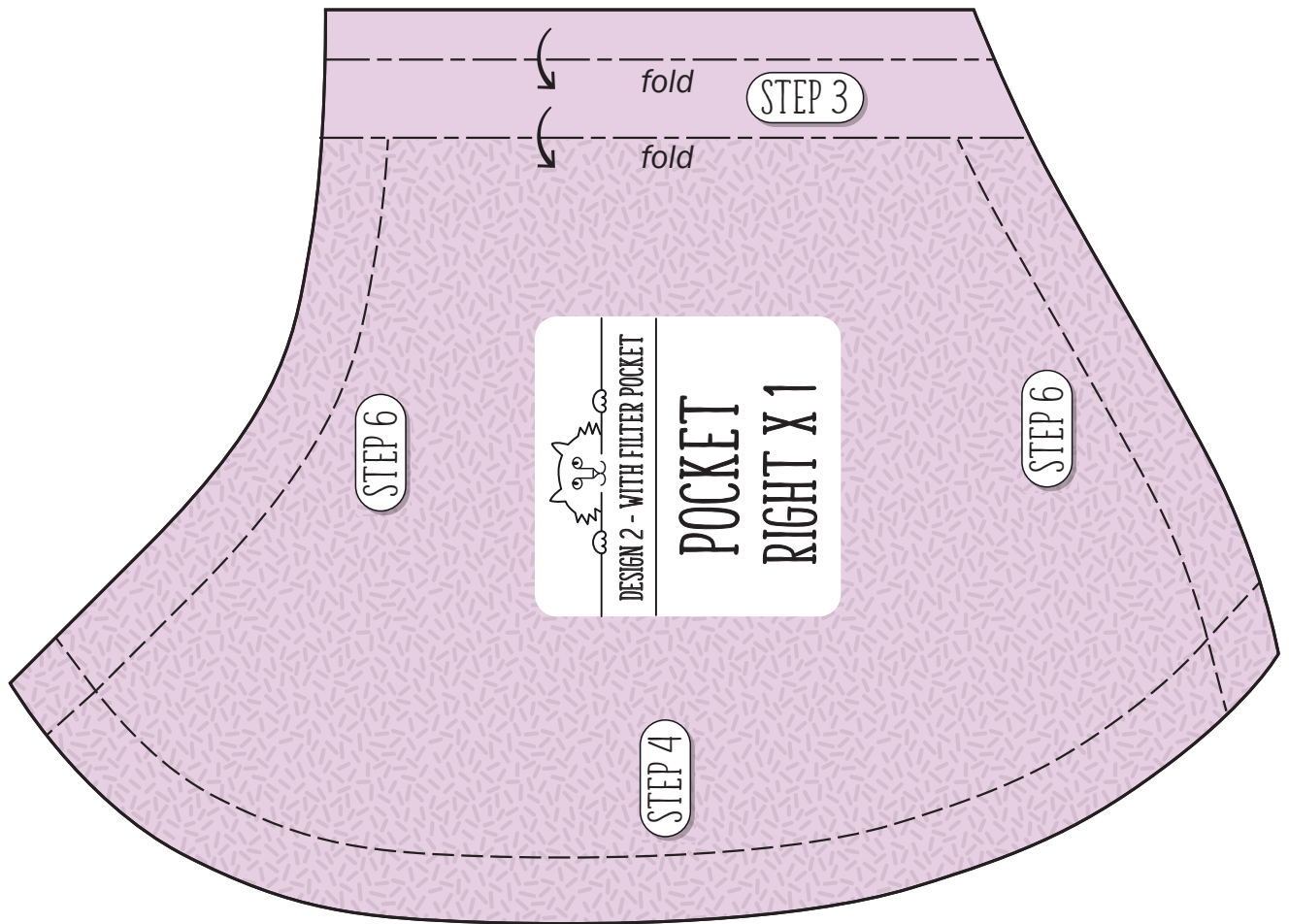
Scale

2cm



**Scale**

2cm



**Scale**  
2cm



[www.black-cat-art.com/face-masks](http://www.black-cat-art.com/face-masks)